

OziExplorer

Module 2

Load & Calibrate Map Images

**Practical Training Course
by Chris Rule**

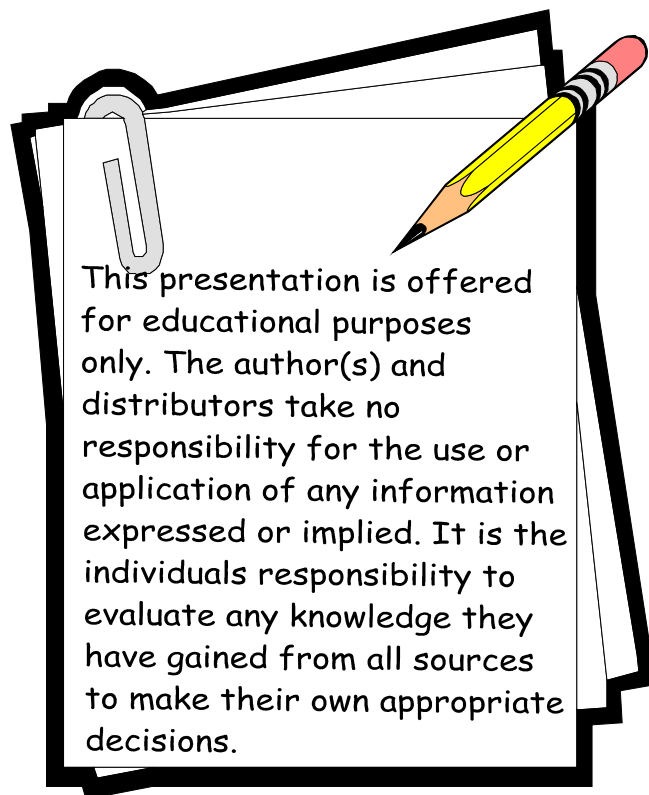
INTRODUCTION

The purpose of this manual is to serve as a teaching guide for students who want to learn Oziexplorer.

This is not a complete guide to OZI. The student is expected to take the fundamentals acquired and to go on, on their own to learn the program more in depth.

OZI is being continually upgraded so any manual produced is quickly out dated.

There seems to be no end to what OZI can do, moving map on Palm Pilots, OZI 3D, OZI used for Automatic Radio Position Systems, OZI linked with digital cameras, and the list grows day by day.



LOAD & CALIBRATE MAP IMAGES (making your own map)

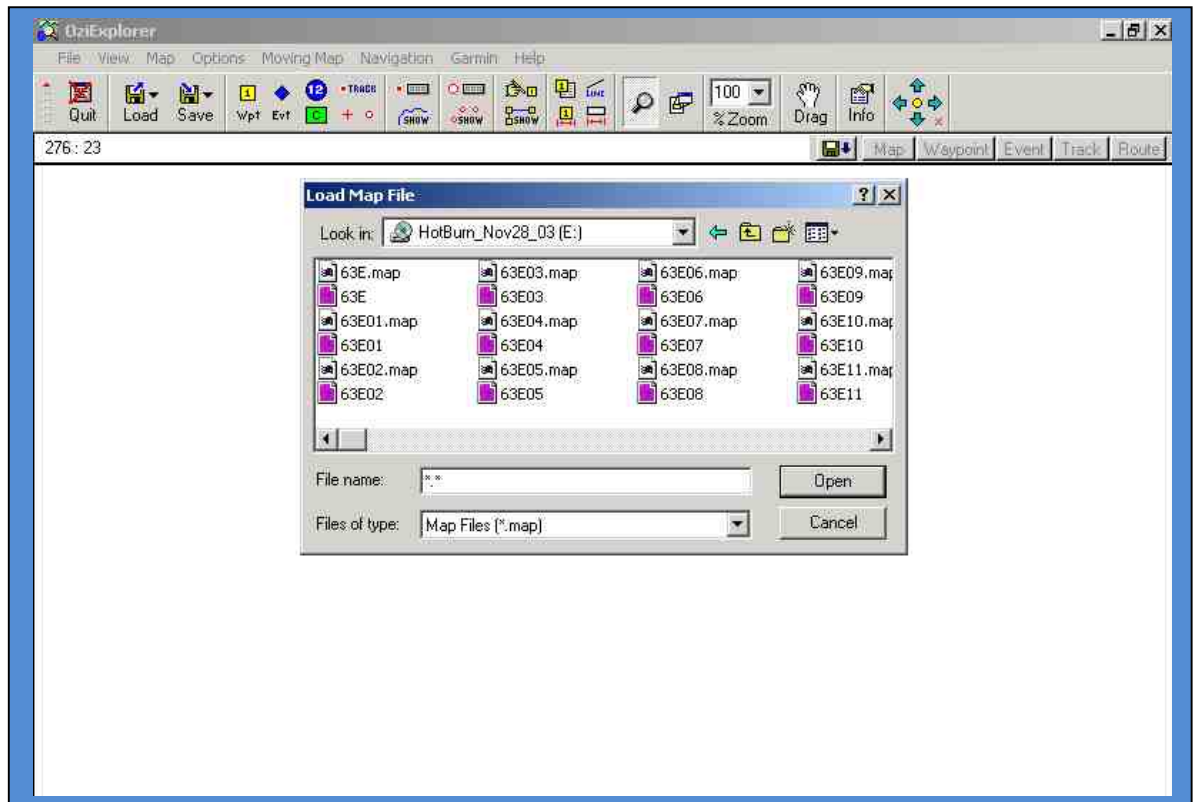
This section will show how to bring in a scanned map or a map from the internet and calibrate it for OZI use.

The first step is to acquire an image of a map and save it to a file where you can find it again. The image can be a jpeg, bitmap, png, bmp. The image can be from a scanner, down loaded from the internet or almost any source.

The second step is to import or load the image or “picture “ of the map (from your file) into OZI. Then go through the steps of calibrating the map. This means entering 3 or 4 known lat/long locations on the map image so OZI can “stretch” or “massage” the map to be more accurate. Ozi then creates the calibration data as a file extension .map



The screen below shows the map file and a corresponding map image with the same ident number. In order for OZI to recognize a working map, it requires the **two files**. Normally you will only see one listed, the .map file the other is hidden from view.



DOWN LOADING A MAP

Let's go to the internet, find a map image and bring it into OZI and calibrate it. (*or get a map from your scanner*)

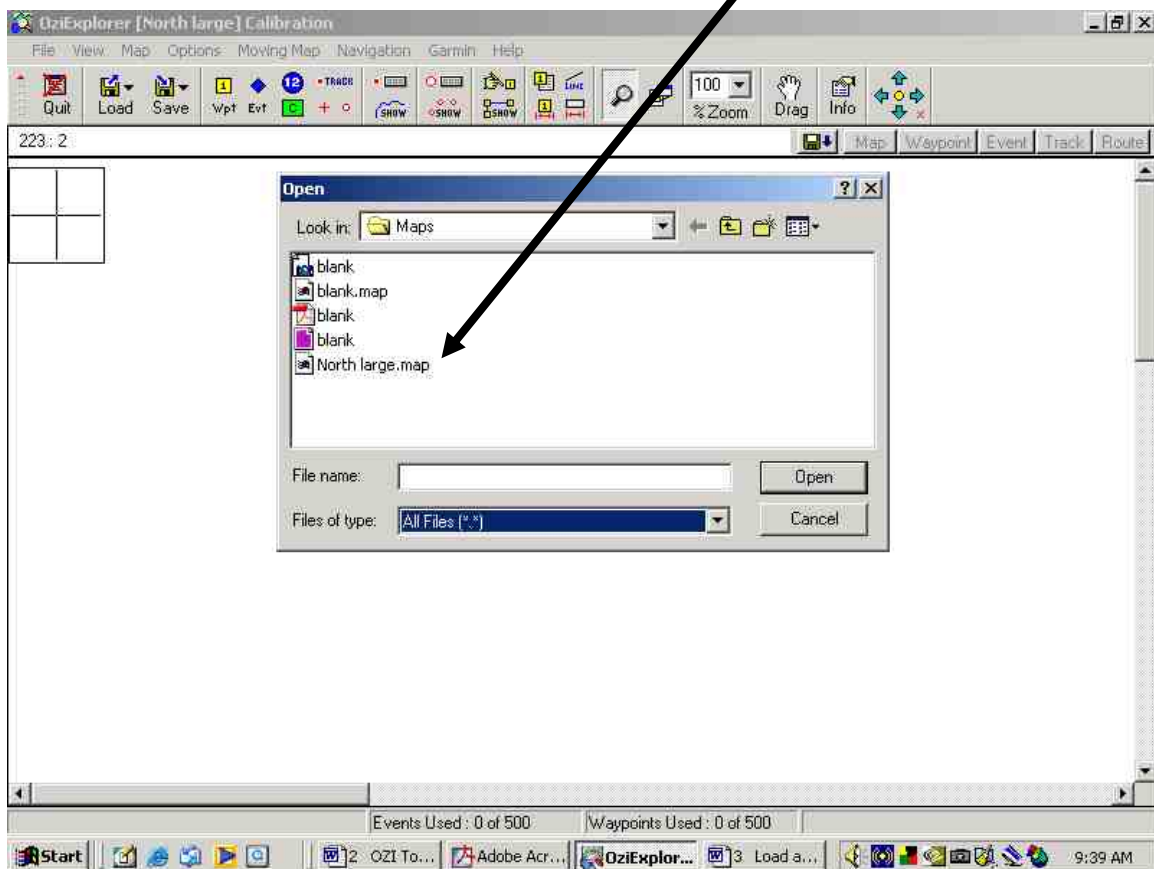
To begin - go to Internet

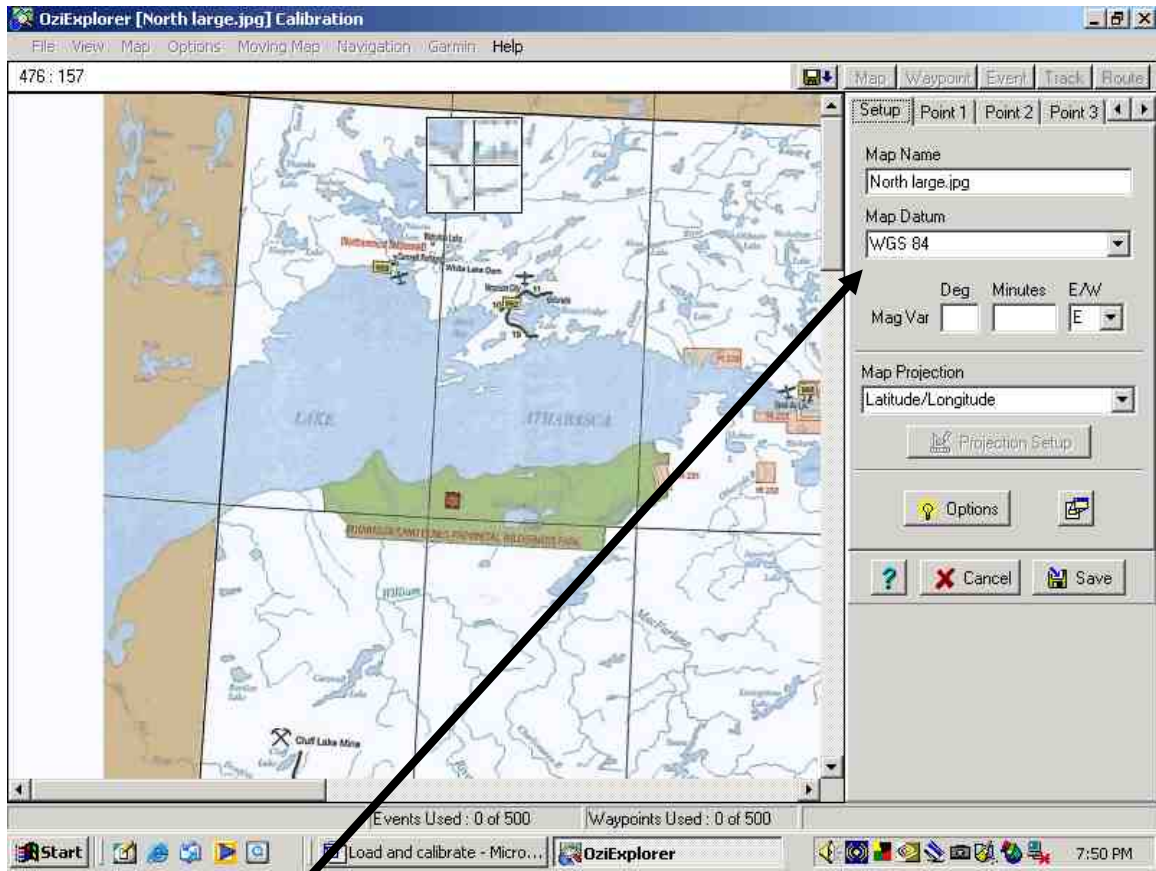
<http://www.sasksearch.com/index.php?viewCat=174>

Right click on the map image of Northern Saskatchewan and save the picture to a file you made called "MAPS" in Oziexplorer (**in C: drive**), I named this map as "North large" (*this is also where to save your map from the scanner*)

Now go into OZI

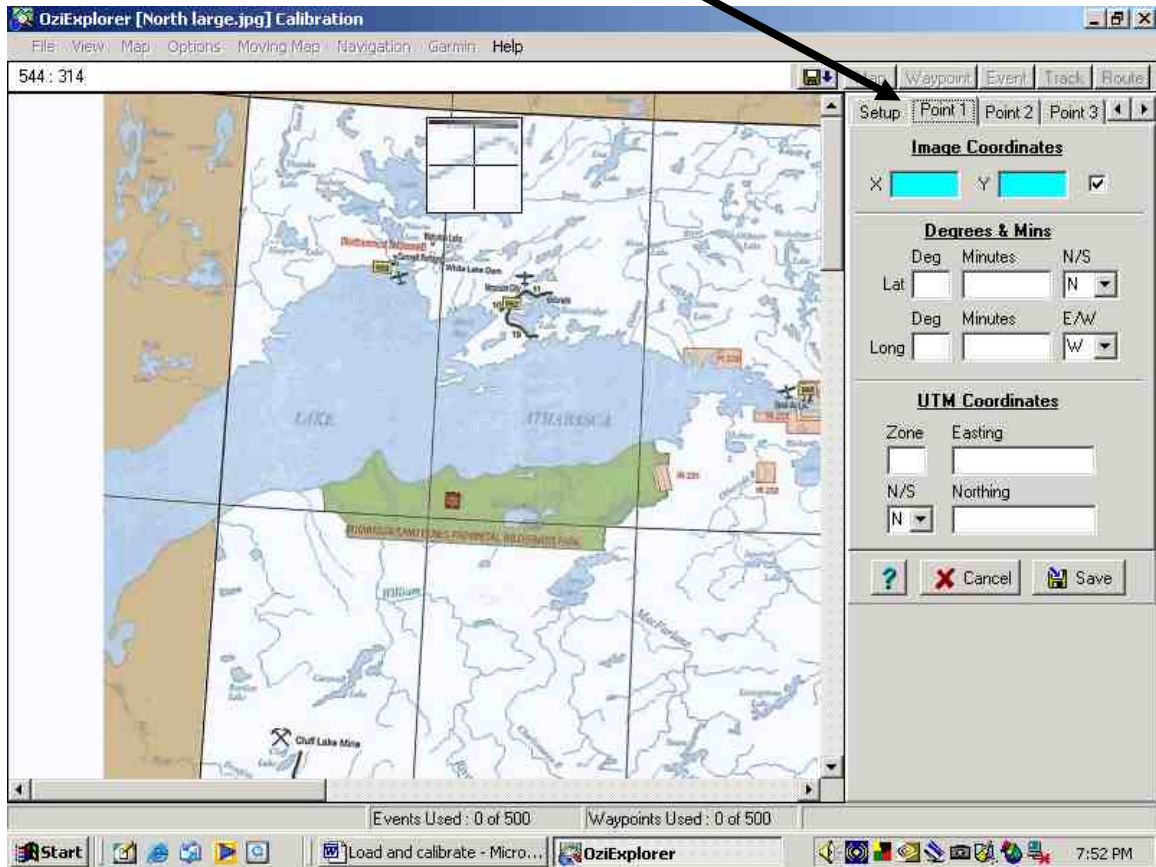
File – Load and Calibrate – browse until you find your **MAPS** file
and then select "**North large**"
– double click on it and it will open into OZI





First set the **Map Datum**. Check the map that you imported to determine the Datum. Select correct datum from drop down box. (if you cannot find the DATUM from the map then use the default WGS 84.)

Now to calibrate we will click on the **Point 1** tab. We will enter known location **Lat and Long** coordinates of 4 different Points
(or UTM if using that type of map)

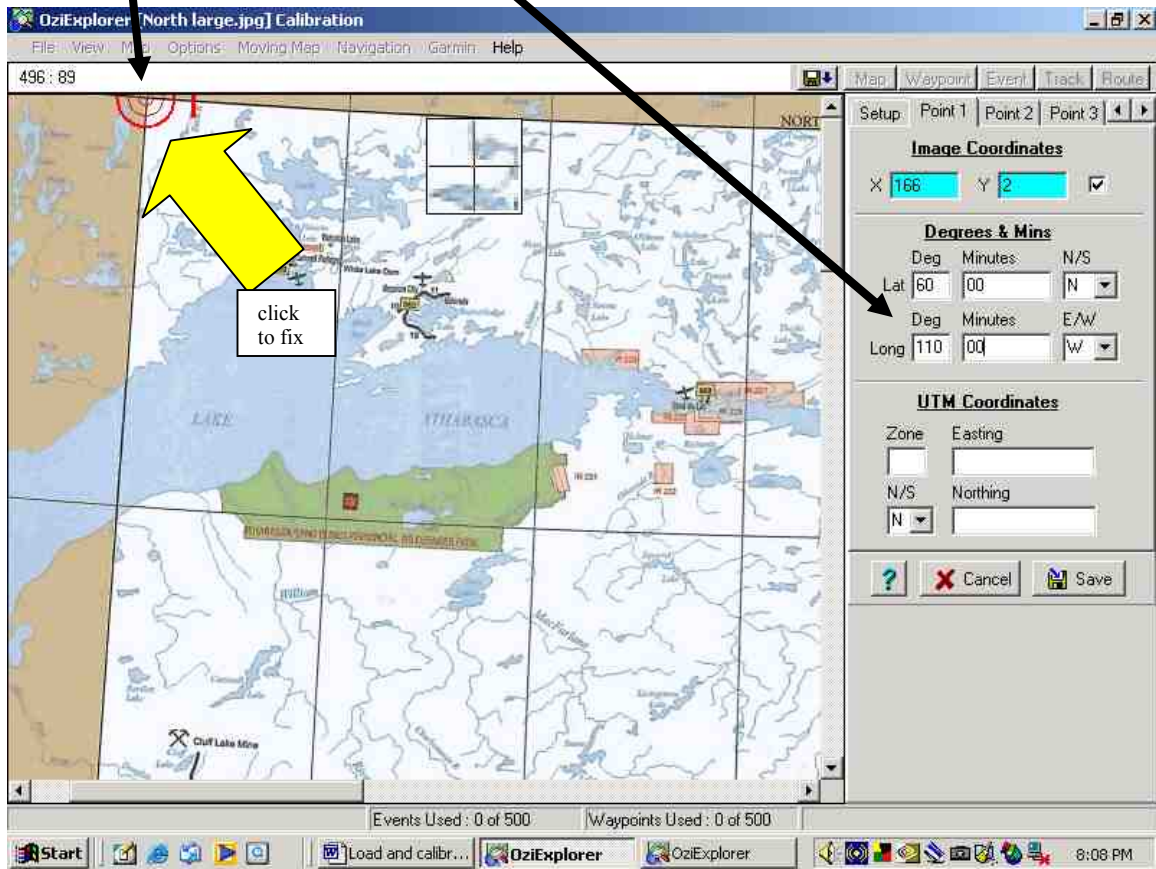


Note the pointer when you move it over the map will show a cross hair saying **Calibrate Position 1**

We will calibrate 4 points in this example using 4 point tabs.

Move the cursor to a known **lat and long** position such as upper left corner of Saskatchewan and left click to fix **Point 1**

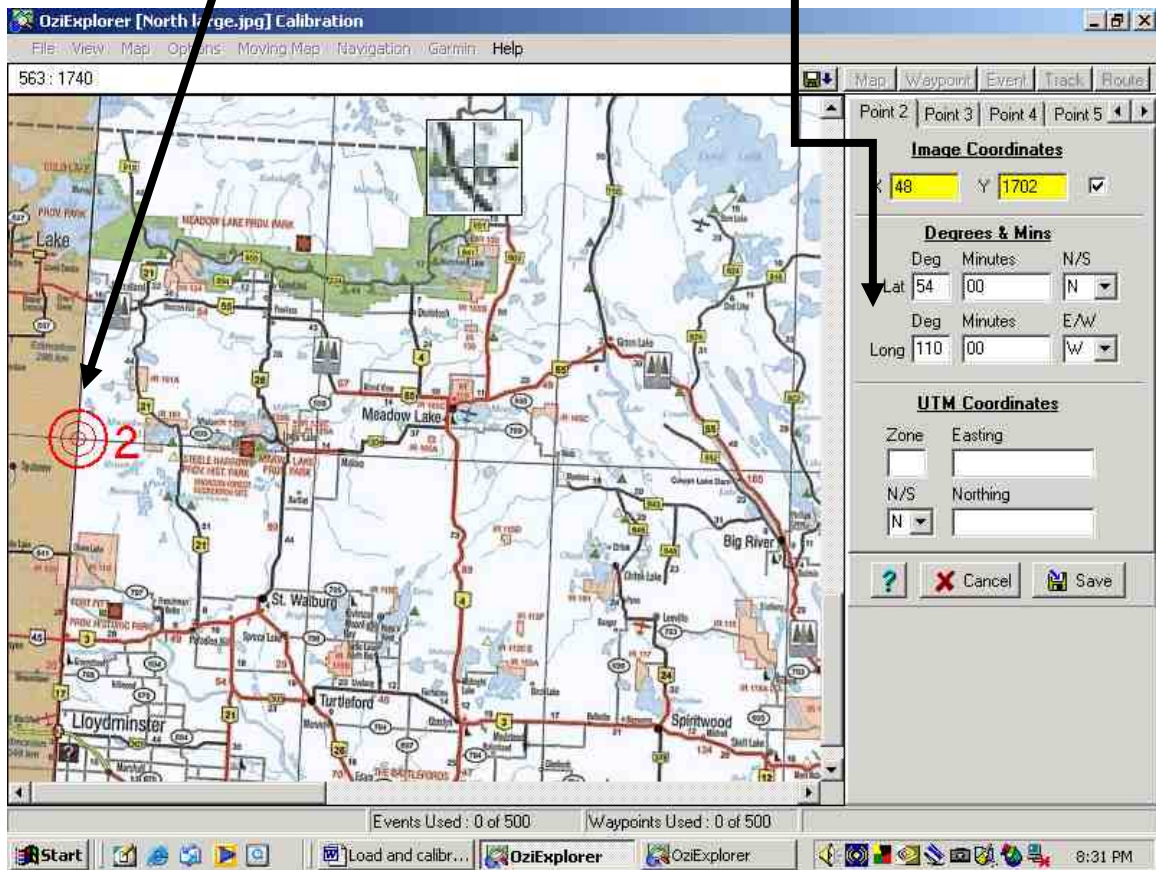
We know this point to be **60° North and 110° west**, enter this information into the **Lat & Long** boxes as shown. (or UTM)



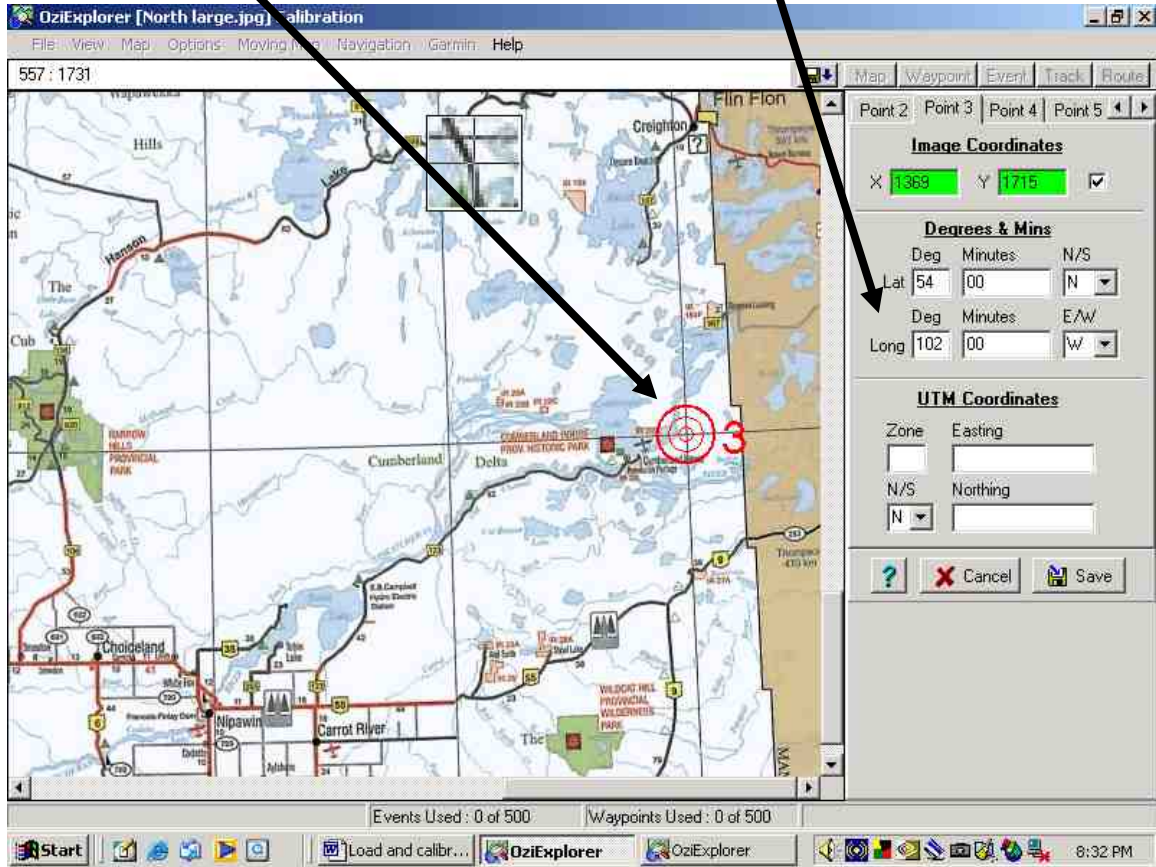
Point 1 is now fixed and the Lat & Long entered

Now click **“Point 2”** Tab

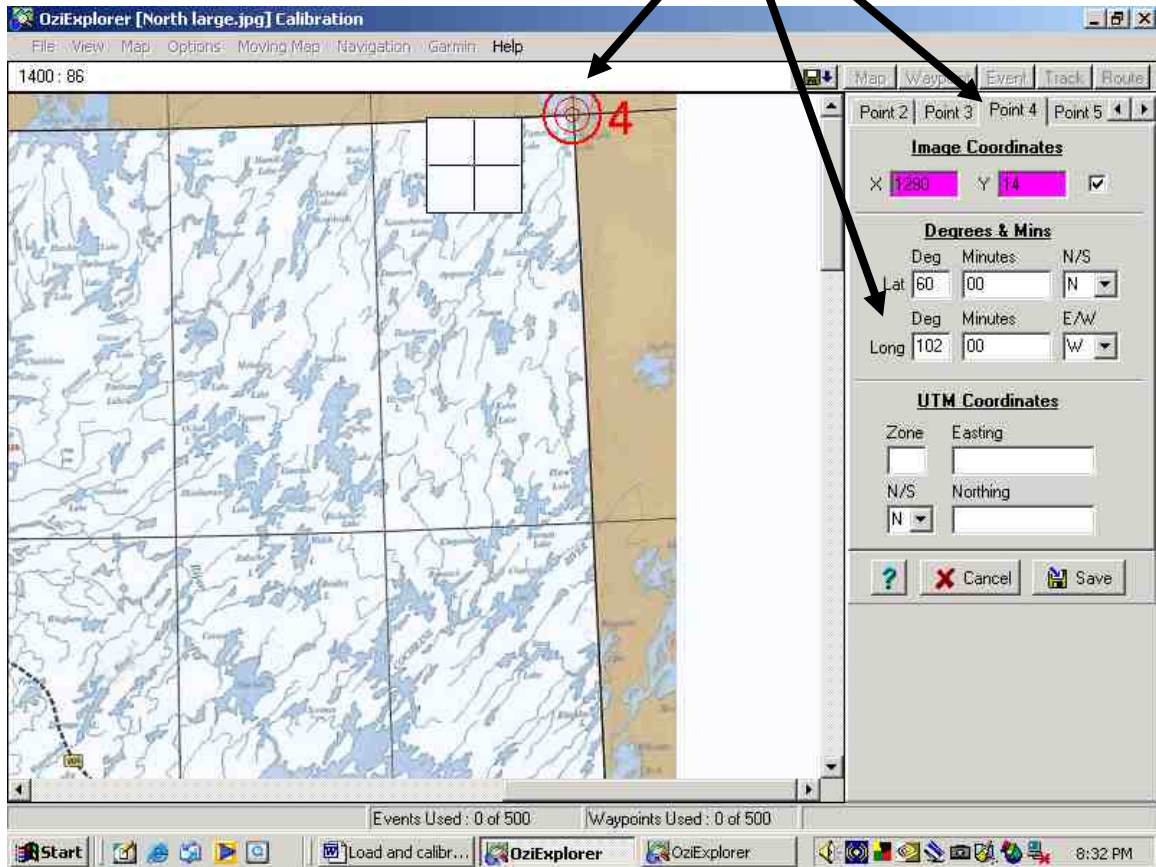
And then fix **Point 2** at **54° North Latitude** and **110° West Longitude** .
(we know this is the 54th parallel and its on the Alberta border 110°)
Enter **Lat & Long** of the point



Now do **Point 3** , stay on the 54 th and go east to Manitoba border. The Longitude near Cumberland House is 102° West. **Enter 54, 00 N and 102, 00 W**



Now go North to the top 60°N and 102°W and fix Point 4

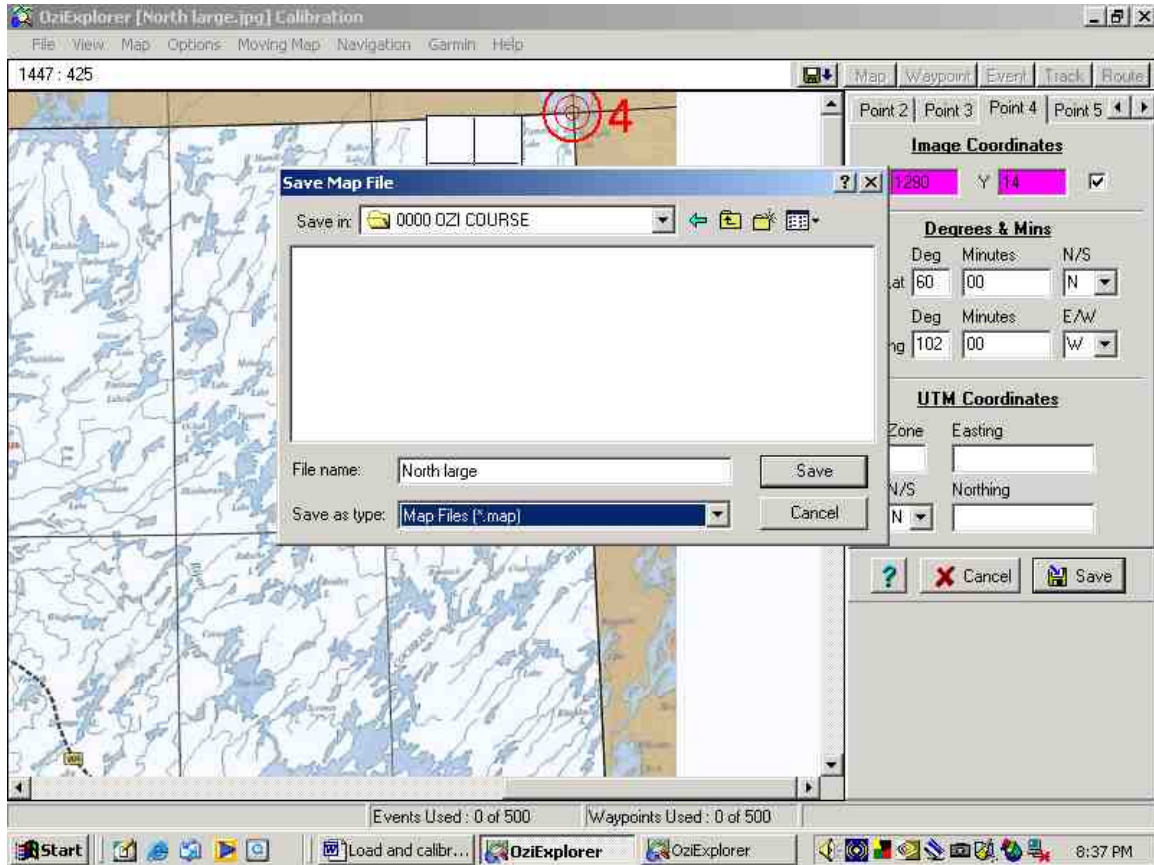


Point 4 is fixed and Lat & Long entered. Normaly 4 points are enough.

Now you are done click “**SAVE**”

Up will come a box, **browse until you find the same file you saved the original image in**. You probably won’t see the image file but it there. Keep the same name for saving.

I had chosen “**North large**”



Note :The box came up with different File (as shown above)...**you have to browse** and find your original **MAP** file in Oziexplorer, and save it there.

Note this is saved as a “**Map file**”

Click “**SAVE**”

Poof, Congratulations you have calibrated and saved a map that can be used in OZI !

To find it again go to the file where it was saved ... if you don’t see it you may have to go *.* and have all files come up, then select the **North large** with the **map file extension**, bring it into OZI and then go to **File – Save to file – Save map to file**. Now when you check the file it will appear. You won’t see the image file unless you go *.*