

# OziExplorer

## MODULE 7

### Printing Maps

**Practical Training Course  
by Chris Rule**

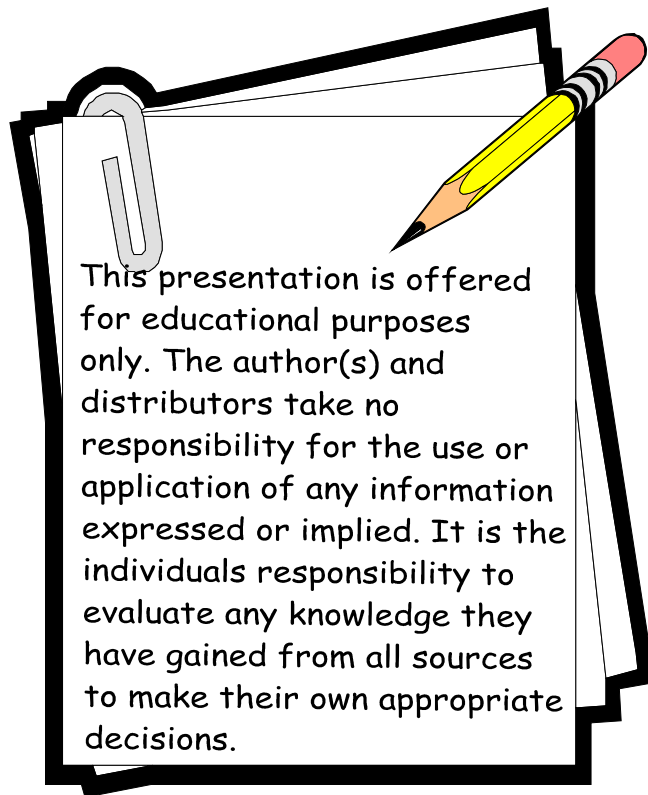
# INTRODUCTION

The purpose of this manual is to serve as a teaching guide for students who want to learn Oziexplorer.

**This is not a complete guide to OZI.** The student is expected to take the fundamentals acquired and to go on, on their own to learn the program more in depth.

OZI is being continually upgraded so any manual produced is quickly out dated.

There seems to be no end to what OZI can do, moving map on Palm Pilots, OZI 3D, OZI used for Automatic Radio Position Systems, OZI linked with digital cameras, and the list grows day by day.

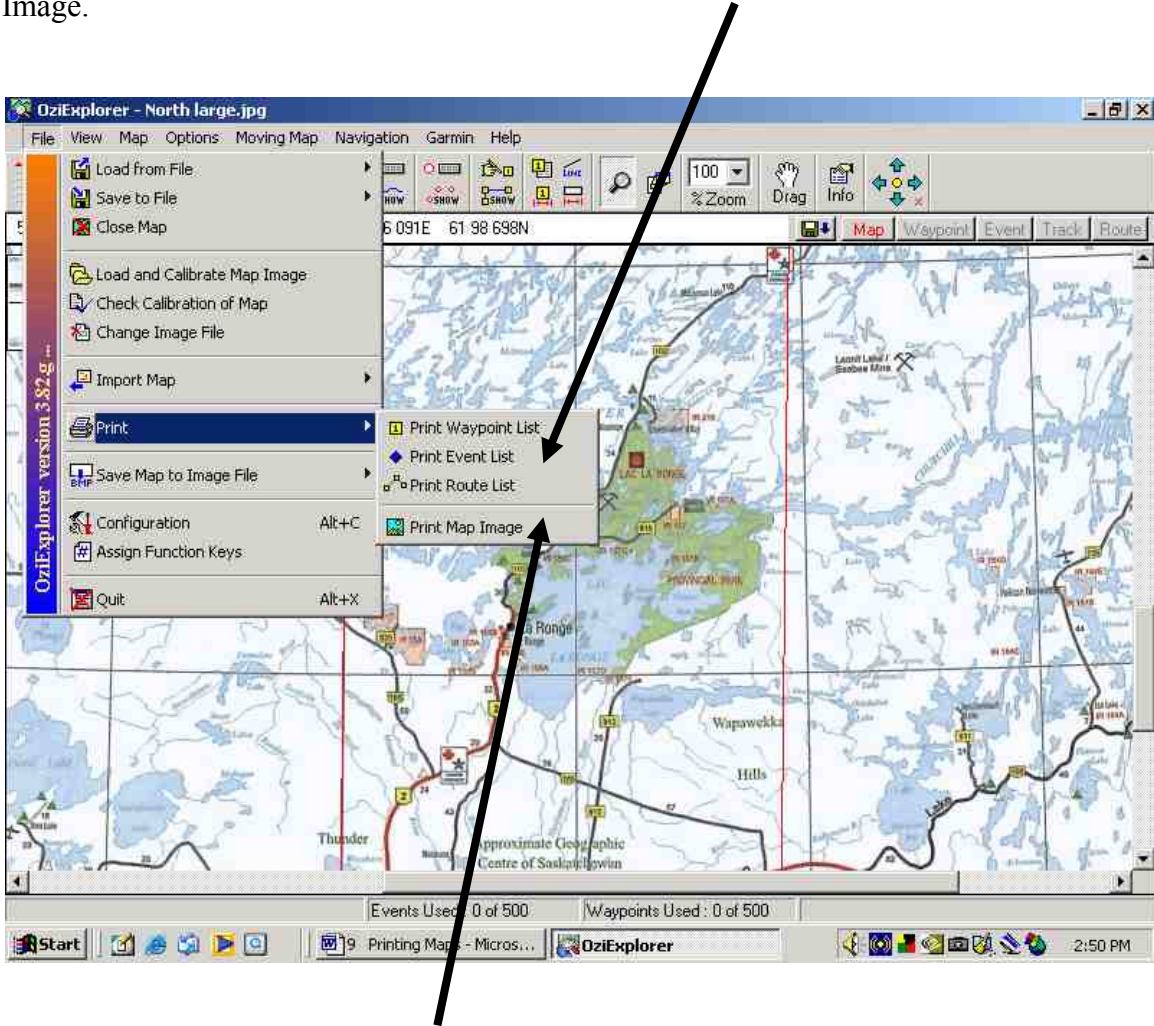


# Printing Maps or Section of a Map

## Printing a map

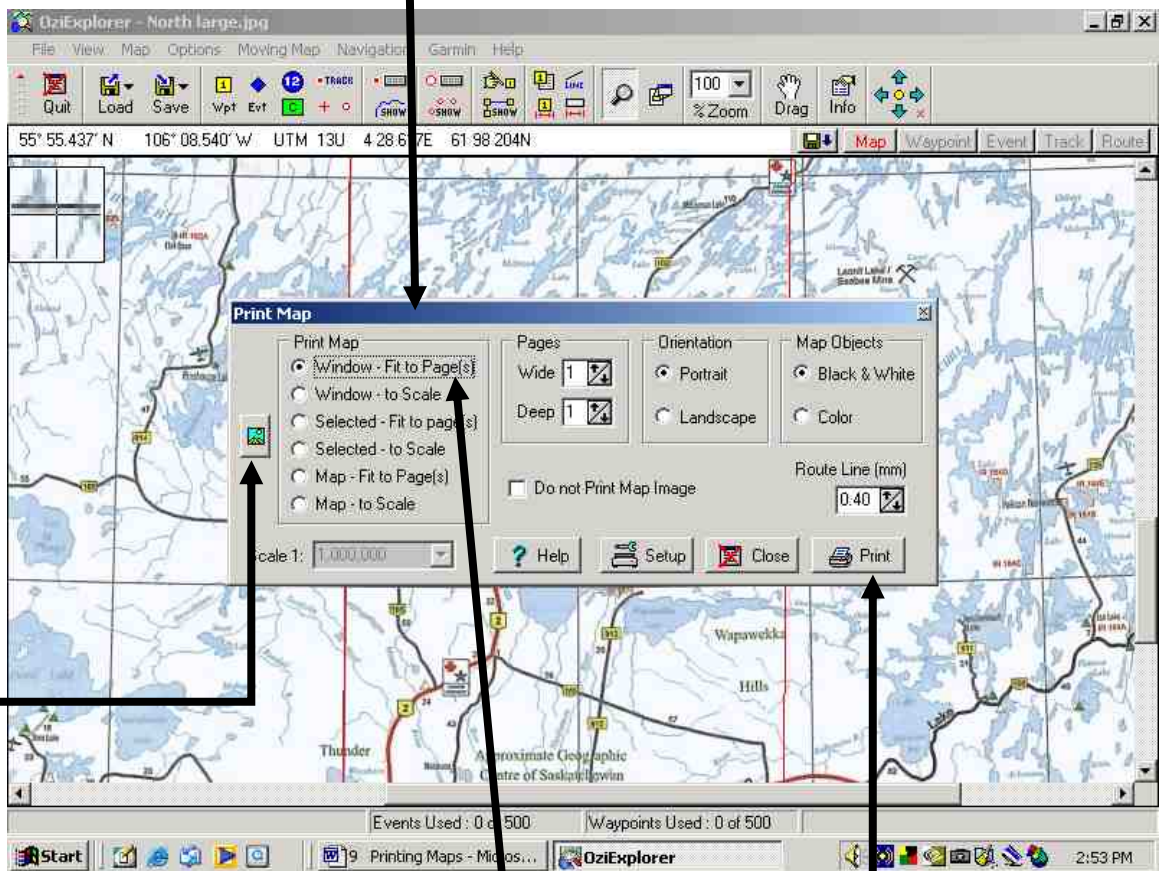
To do **Printing** go to **FILE – Print**

Here you can select to print off **Waypoint lists, Events and Routes** as well as Print Map Image.



Let's select **Print Map Image**

Up comes the **Print Map** box



Let's select **Window – fit to Page(s)**

**Pages** can be set at 1

Choose **Portrait** or **Landscape** depending on what you want.

Choose **Map Objects – Color** if you have a color printer.

**Route Line (mm)** - 40 is ok, change if desired. This changes the width of the Route line.

**Do not Print Map Image** – if you select this then only the waypoints, events, routes, etc are printed.

The **picture icon** on left allows you to select portions of a map to print if you don't want to print the whole map.  
*More about this on next page.*

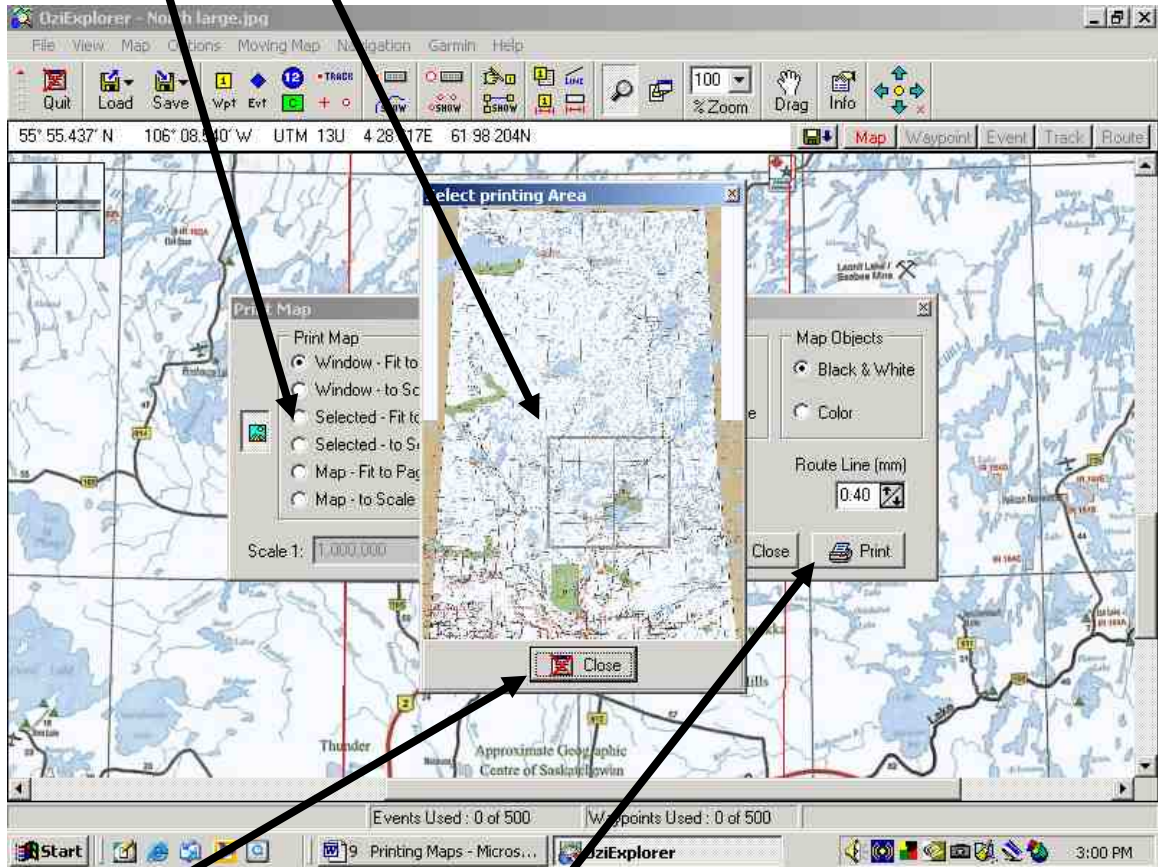
Click **Print** icon to print.



**To print a section of a map.**

Click on **Selected- Fit to Page(s)**

Click and drag a box around the area you wish to print.



Close out of this box and click the **Print** icon to start printing.

If you want to change printer properties go to **Set up**. (Hidden behind **Select printing Area** box in this example, it is to the left of the **Print** icon)

\*\*\*\*Newer versions of Ozi have a slightly different way of selecting the area to print, but it is easy to figure out.

***CONGRATULATIONS !! You now can print maps or sections of a map.***