

OziExplorer

MODULE 5

Working with Tracks

**Practical Training Course
by Chris Rule**

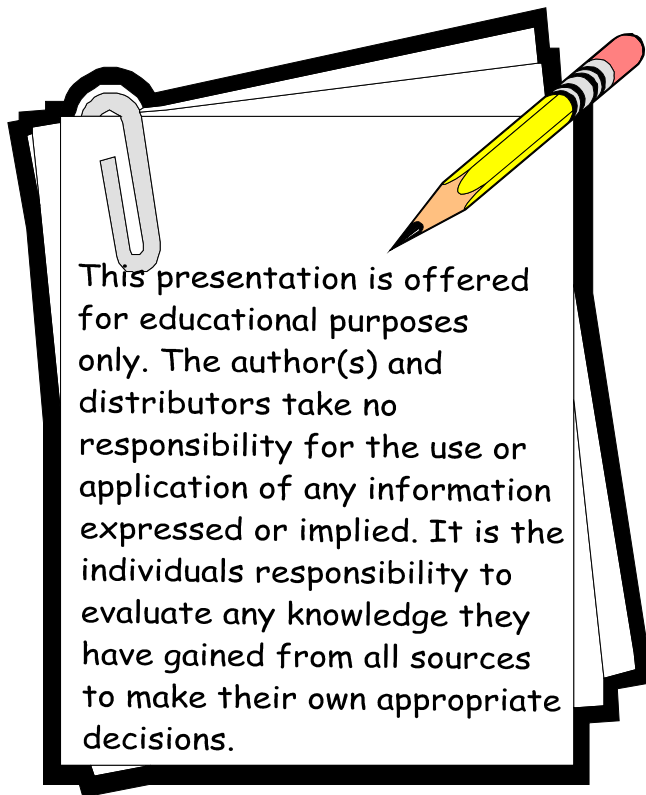
INTRODUCTION

The purpose of this manual is to serve as a teaching guide for students who want to learn Oziexplorer.

This is not a complete guide to OZI. The student is expected to take the fundamentals acquired and to go on, on their own to learn the program more in depth.

OZI is being continually upgraded so any manual produced is quickly out dated.

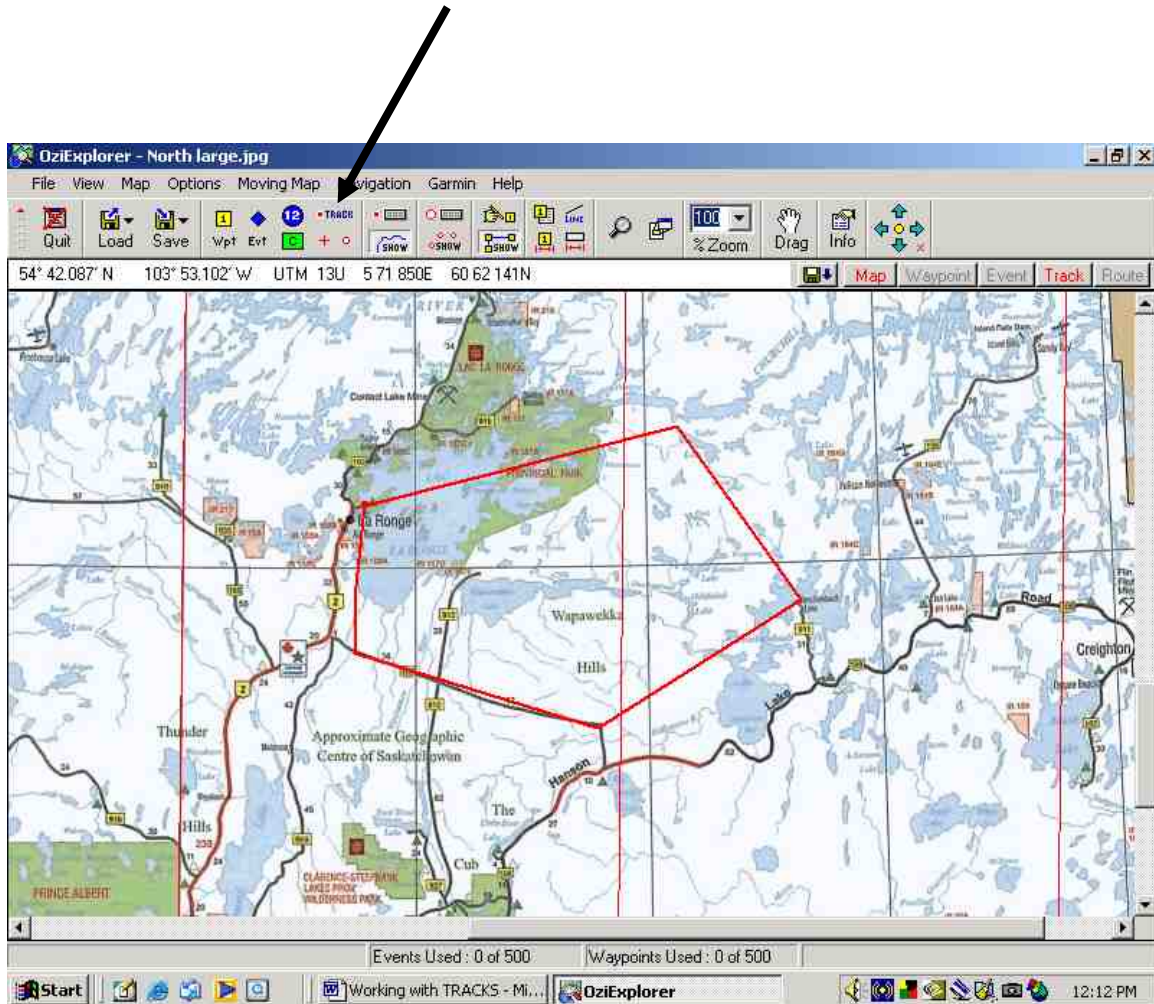
There seems to be no end to what OZI can do, moving map on Palm Pilots, OZI 3D, OZI used for Automatic Radio Position Systems, OZI linked with digital cameras, and the list grows day by day.



Working with TRACKS

Working with tracks is similar to routes. A track is just a whole bunch of waypoints along a trail.

Go to OZI tool bar – click on **Track** icon and manually create a track on the map.

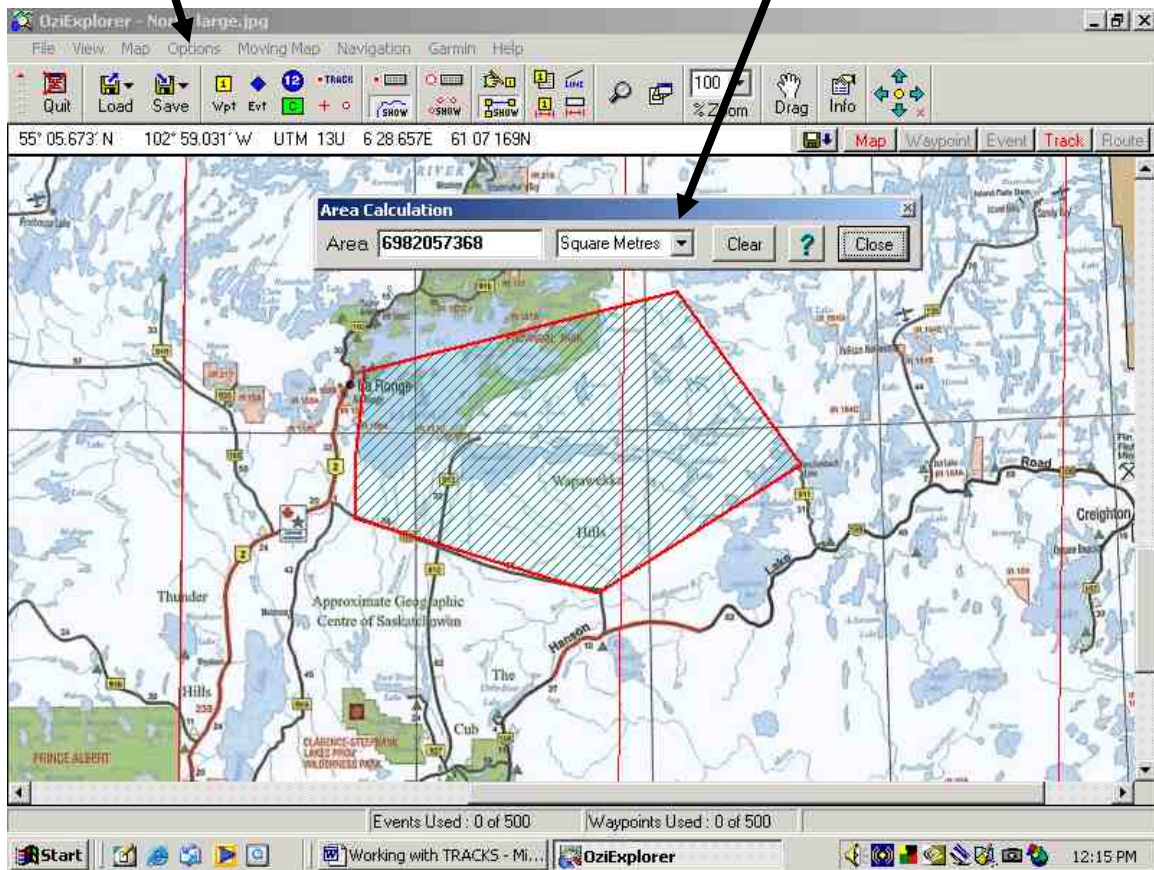


To save - click Save icon - Save Track to File - Save in -

Save this track in OZI in a file called Tracks, call it “Fire Patrol”

Area Calculation

For fun to see how many **square miles** the patrol covered
- go to **Options – Area calculations** – and a box will come up with info. Click in the box to change Meters, Miles Hectares, etc.

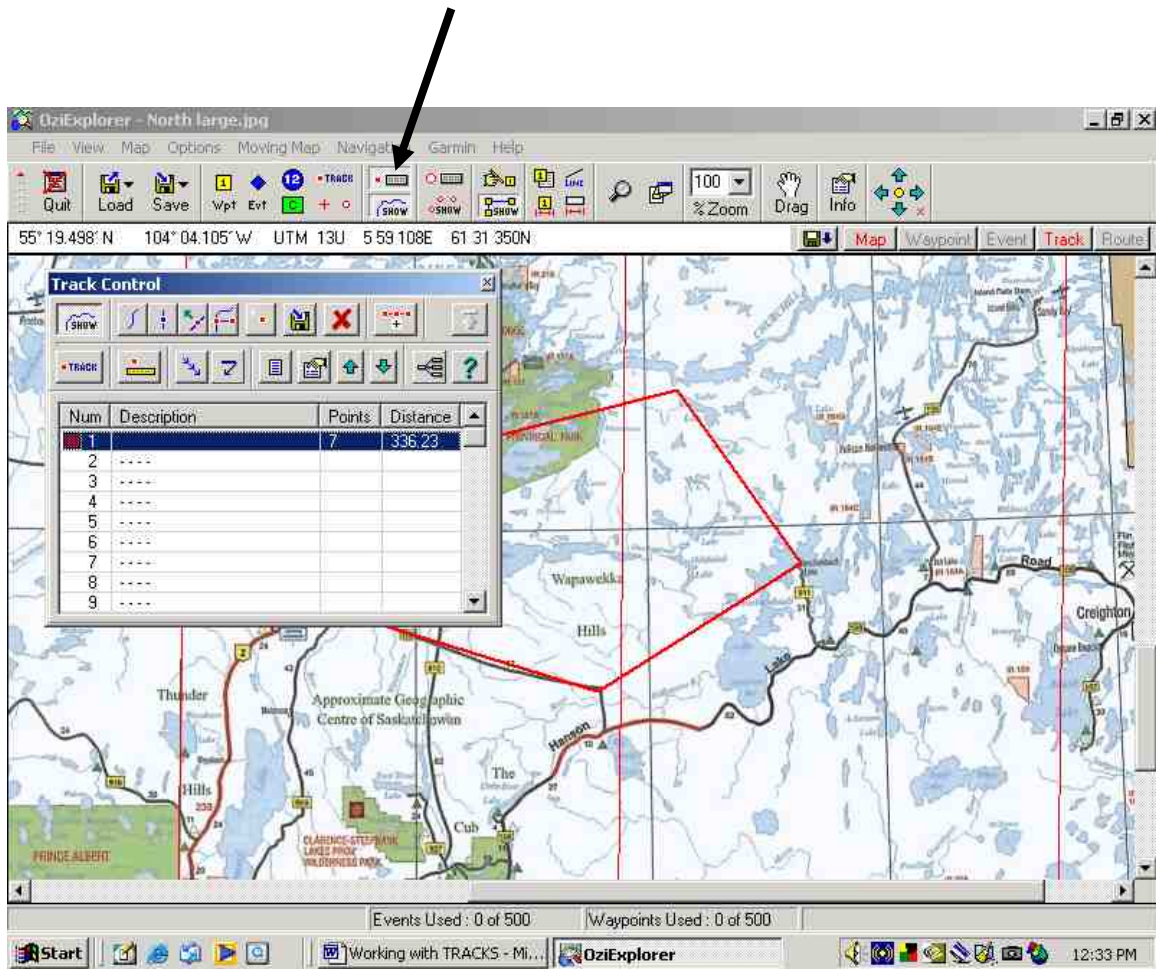



Use this tool to calculate areas of lakes, parcels of land, leases etc.

Now lets go play with Track control, close out of this **Area Calculation** box

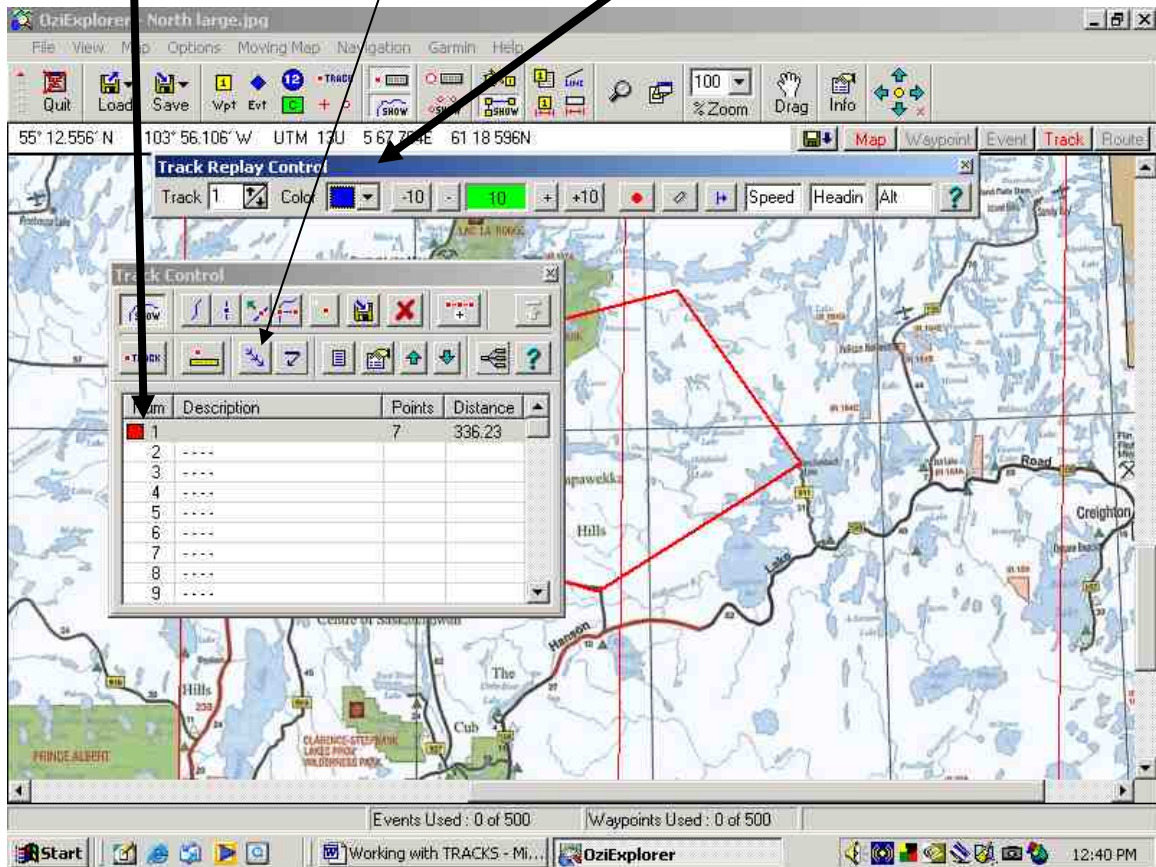
Track Control

Click on the Show/Hide Track Control



With the **first track highlighted**, find an icon called “**More Options**” 
(this example has older icon)

Up will come the **Track Replay** control box



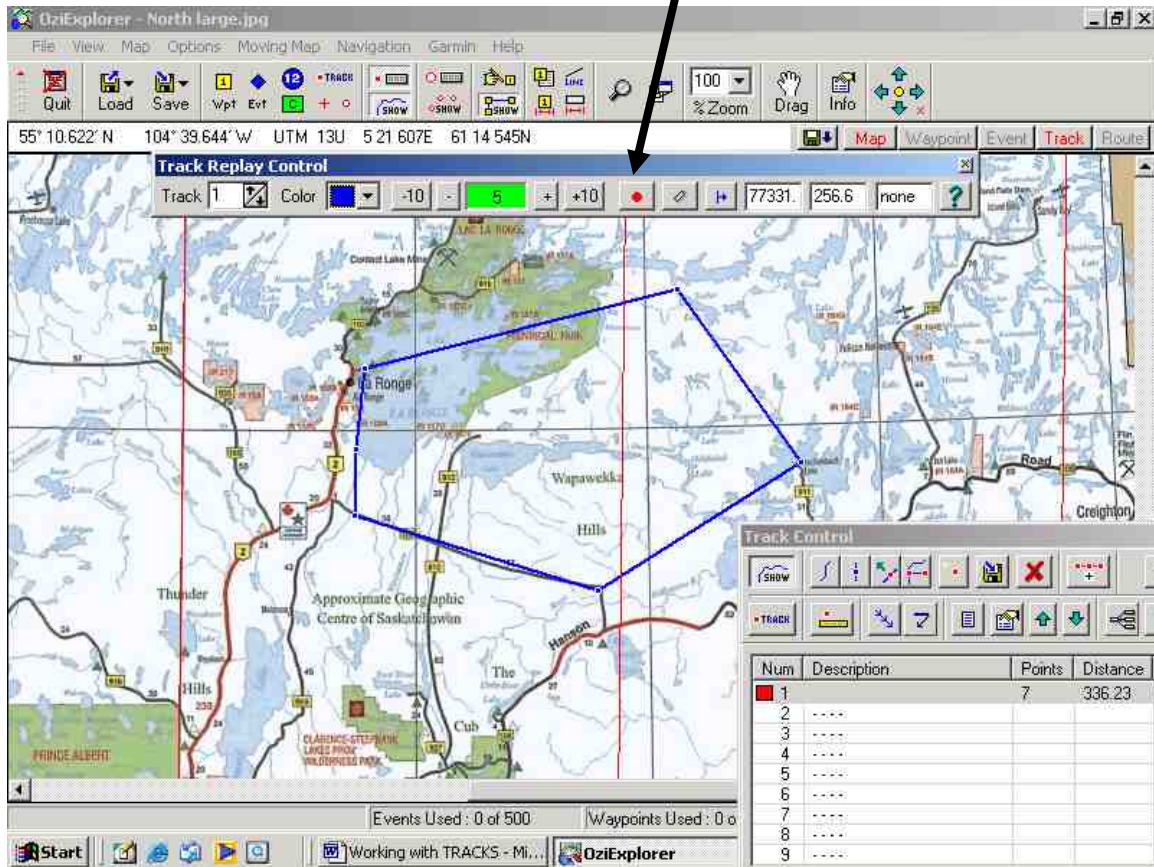
First get the **Track Control** box out of they way by dragging or X it out

Replaying a Track

Set the rate of Replay by clicking in **Track Replay Control** and change the 10 to 4 or 5 in the green field

Then click on the **red dot** in middle of box to **Start/Stop** Track replay

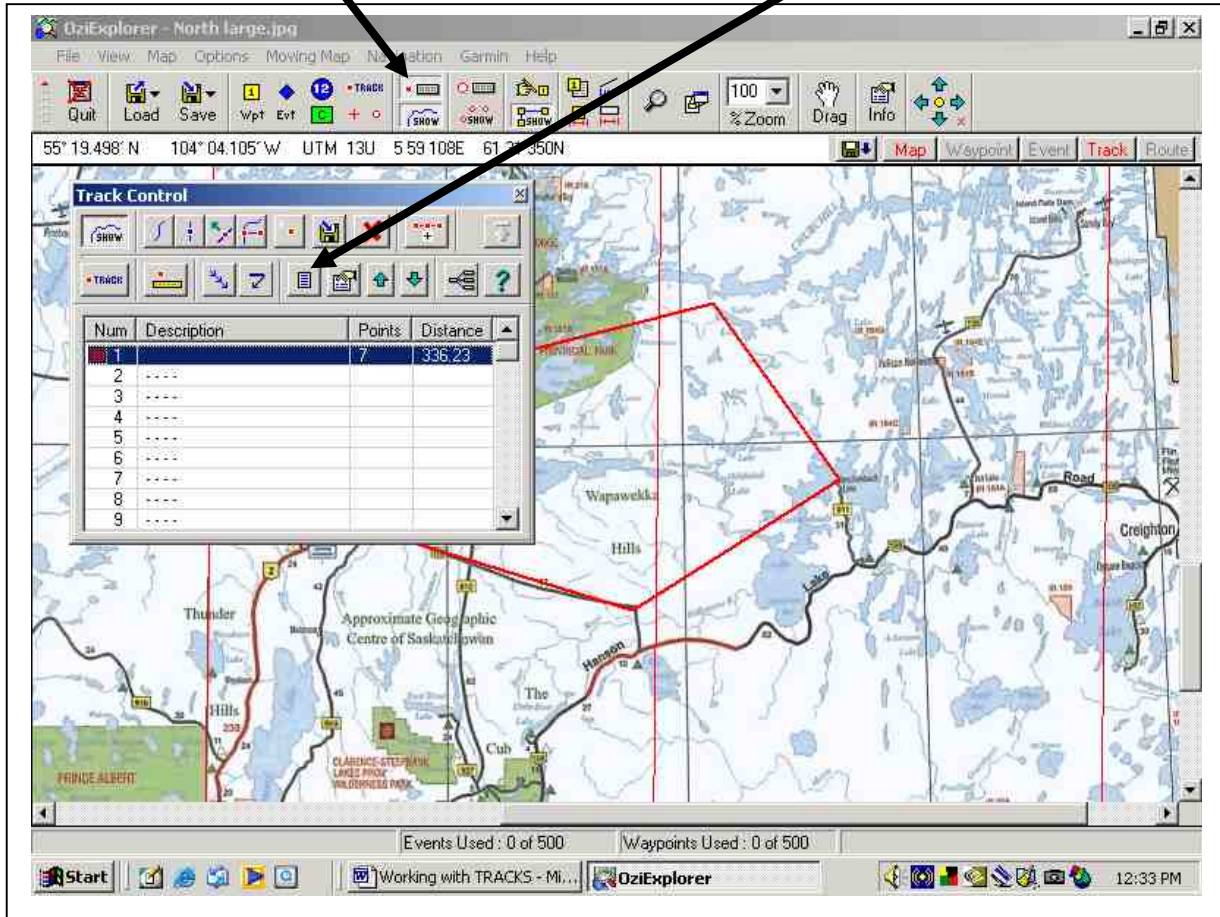
Watch the track change color as it replays the Track

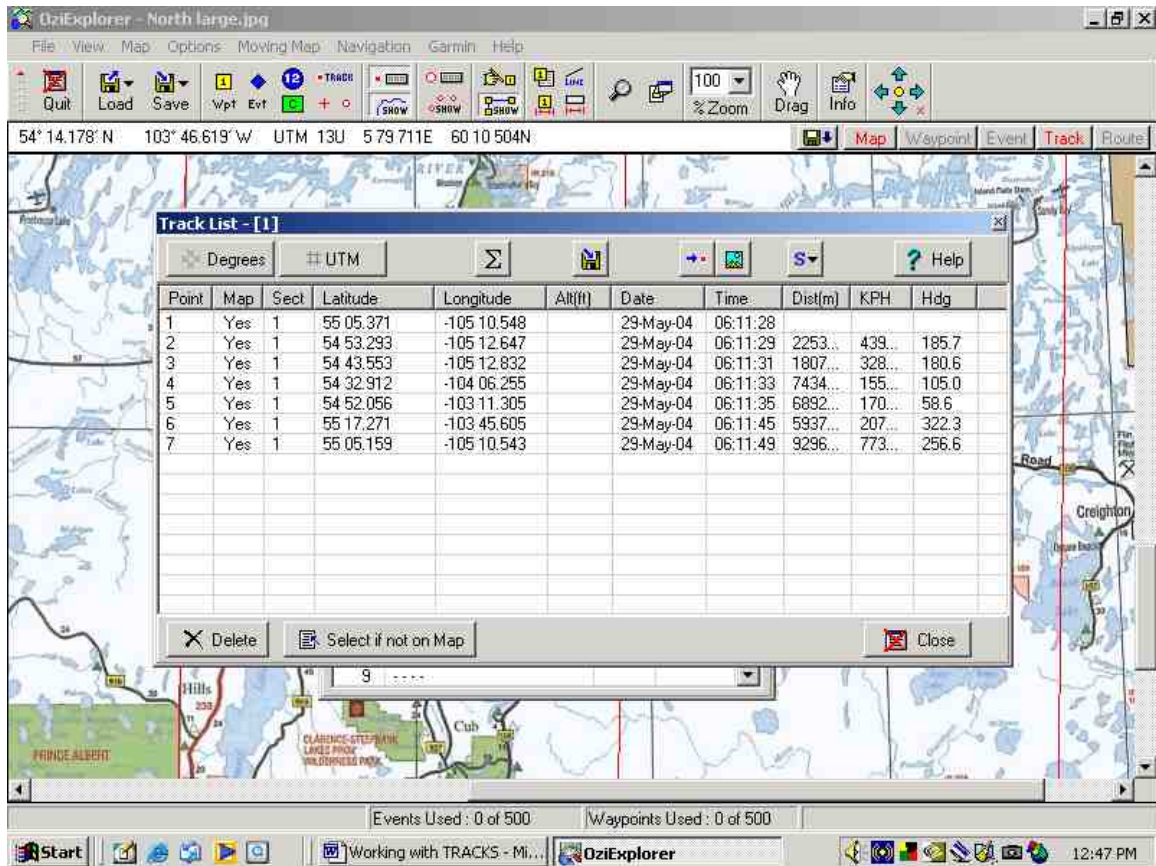


X out the Track Replay Control box when when you are done playing the track.

Checking the Track List

Click on the **Show/Hide Track Control** to bring up box, Highlite your track
In **Track Control** click on the **Show Track List** Icon.





Track List box

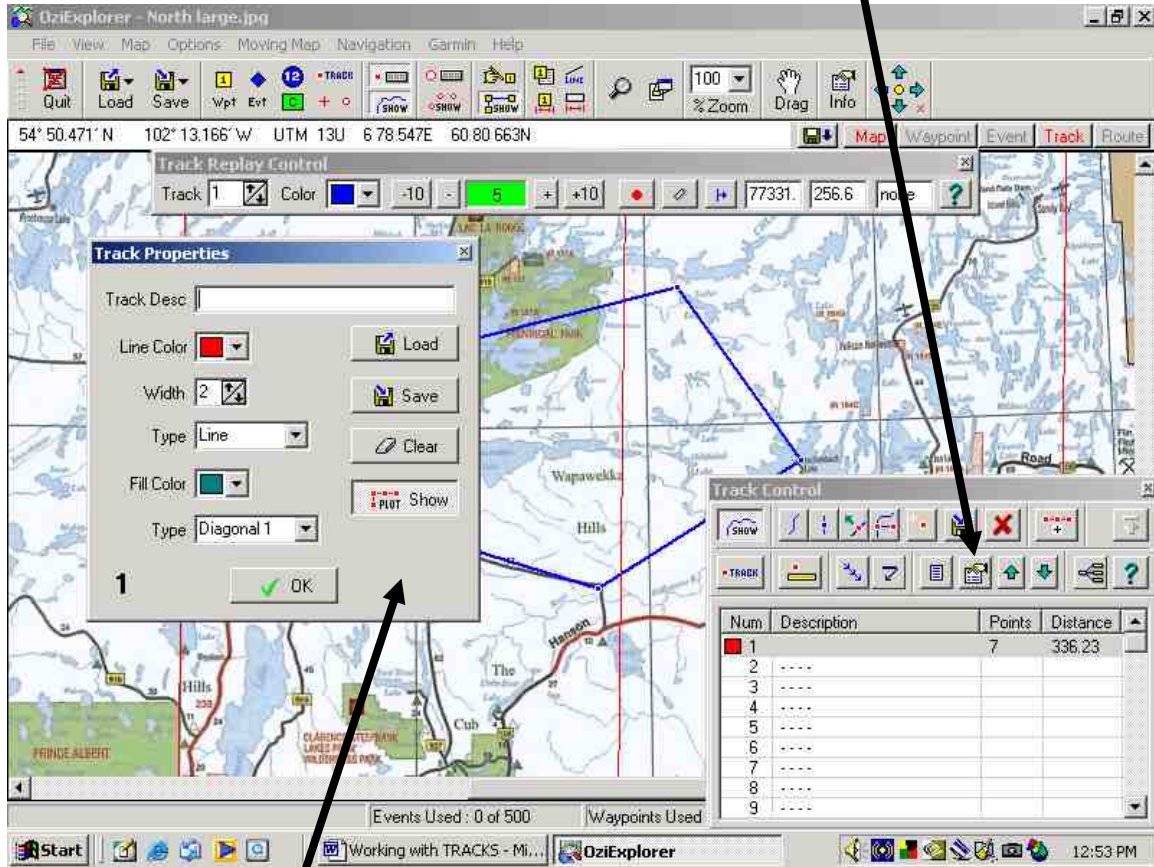
Here you can view each point on the track, time intervals, distance, speed and headings.

You can also change from Lat/Long to UTM, or delete a selected point or points. There are also other editing features.

X out of this box when you are done.

Track Properties

Now go to the icon in the **Track Control** box, the list with a hand on it



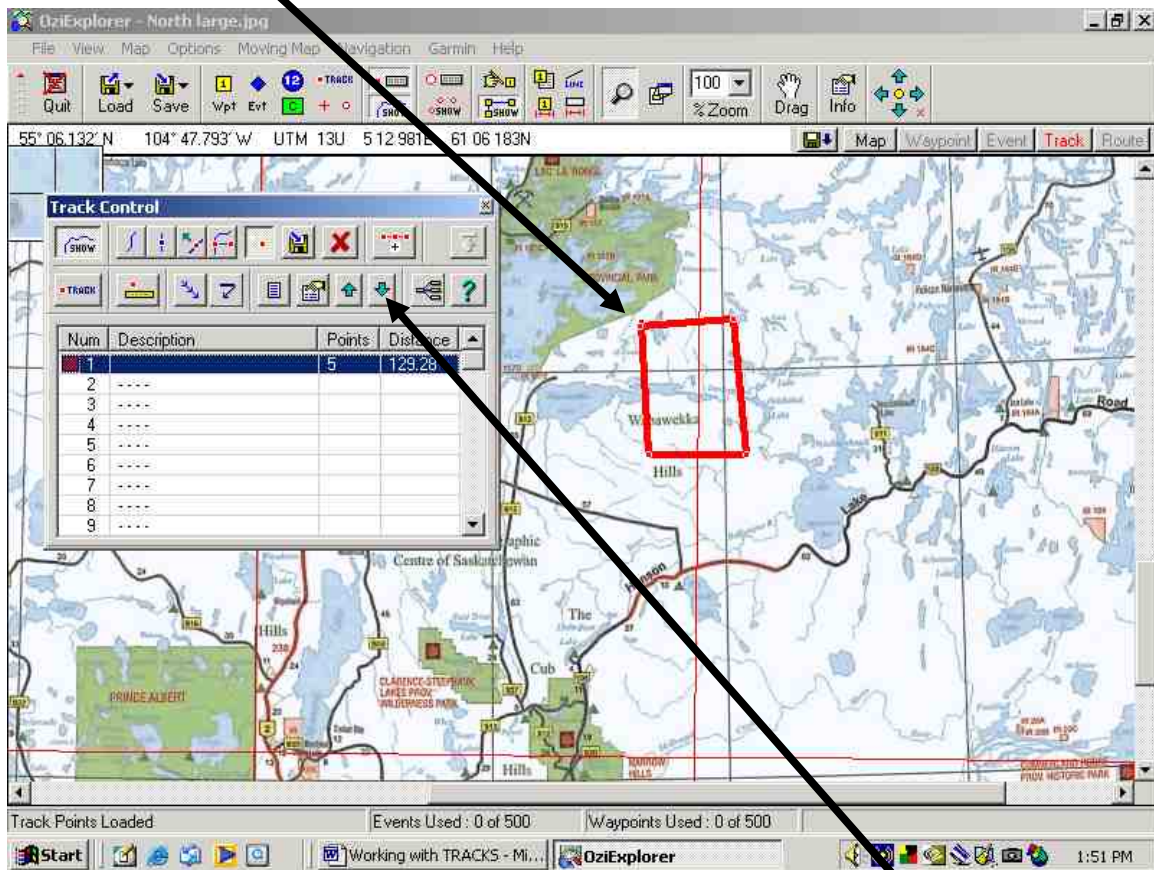
Track Properties box

This is where you can change line width, color, and other things. This is where you can import a track from a CD or a file, or save the track to disk or file.

Creating more than one separate track on the map

Step 1

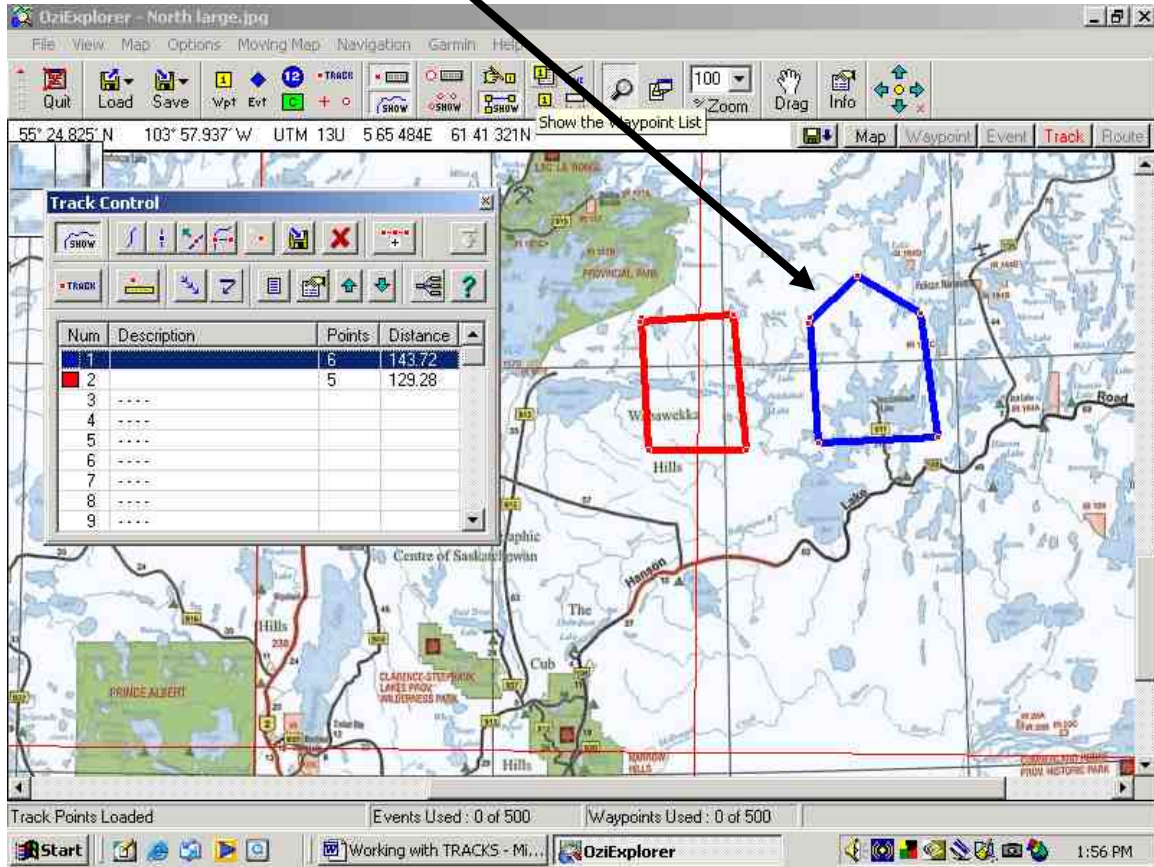
Create a **Track** and bring up the **Track Control** box



Now to create a **new separate track** in the track control box use the **large arrow** icon in second row to move the **red track** numbered **1** to number **two** on list leaving number 1 empty.

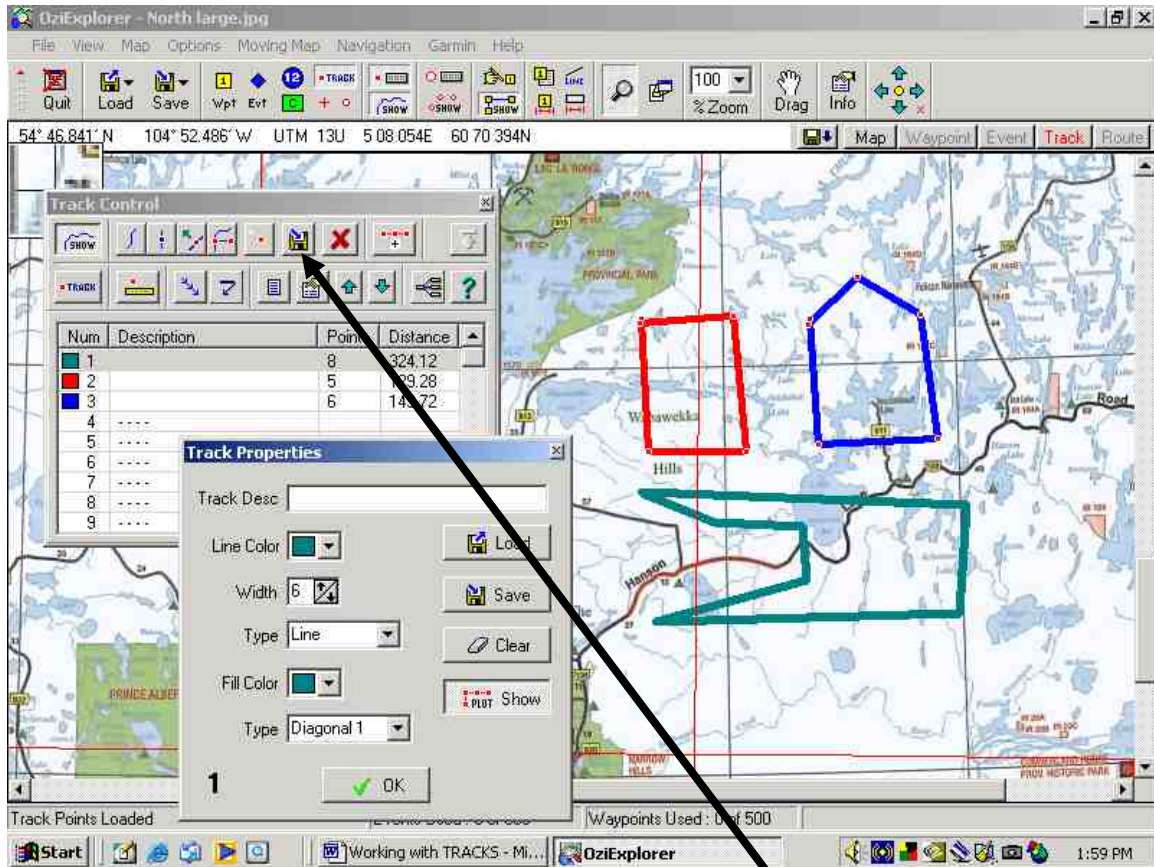
Step 2

Now create the **second track** and edit it to be blue



Adding more Tracks

To create a **third track** move all the tracks down so number one is open. Create a track and use Selected track Properties to edit the color , width etc.



Remember to **SAVE** as you complete each track. Look for the **Save** icon

CONGRATULATION , You can now work with Tracks